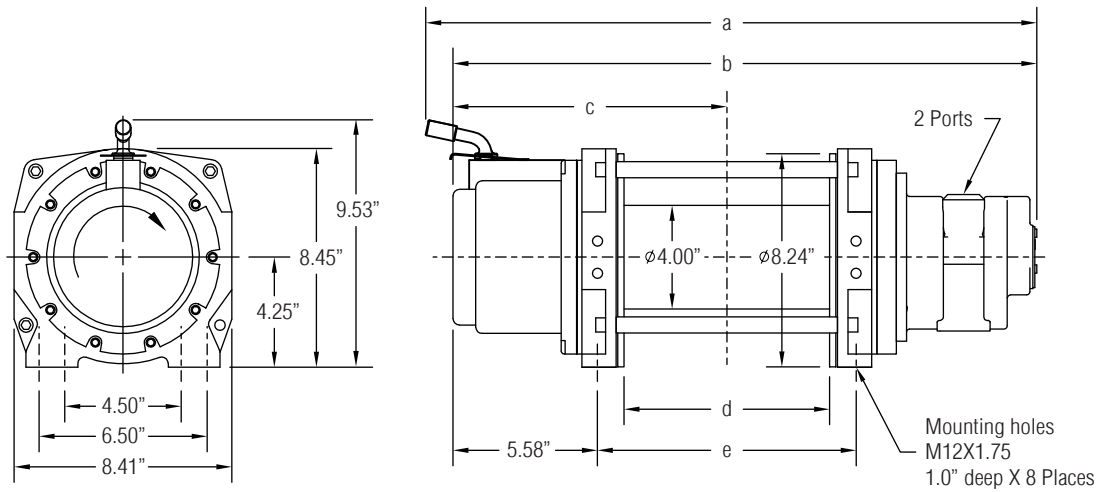


DIMENSIONAL DATA



Drum Size	Dimensions									Typical Weight			Wire Rope Capacity			Motor	Port Size
	a			b			c	d	e	2.5 HP	4.25 HP	6.5 HP	1/4"	5/16"	3/8"		
	2.5 HP	4.25 HP	6.5 HP	2.5 HP	4.25 HP	6.5 HP											
01	22.2"	23.6"	24.2"	21.2"	22.6"	23.2"	10.57"	8.0"	10.0"	76 lbs	86 lbs	94 lbs	326'	228'	159'	2.5 HP	1/2" NPT
02	24.2"	25.6"	26.2"	23.2"	24.6"	25.2"	11.57"	10.0"	12.0"	79 lbs	89 lbs	97 lbs	407'	285'	198'	4.25 HP	3/4" NPT
03	26.7"	28.1"	28.7"	25.7"	27.1"	27.7"	12.82"	12.5"	14.5"	89 lbs	99 lbs	107 lbs	509'	356'	248'	6.5 HP	1" NPT

PERFORMANCE

Model	HP	Power Input		Gear Ratio	Line Pull • Line Speed (Calculated)		
		PSI	CFM		First Layer	Mean Drum	Full Drum
WF1750-P	2.5	70	75	164:1	1750 lbs • 28 fpm	1345 lbs • 36 fpm	1085 lbs • 45 fpm
WF3150-P	4.25	65	110	164:1	3150 lbs • 21 fpm	2425 lbs • 27 fpm	1975 lbs • 33 fpm
WF6300-P	6.5	75	190	164:1	6300 lbs • 21 fpm	4855 lbs • 27 fpm	3950 lbs • 33 fpm

Performance based on intermittent duty cycles.

CAUTION: The final determination as to the suitability of this product for any purpose is solely that of the user. Columbia products are not to be used to lift people or to lift anything over people.

Columbia winches and hoists are available for AC, DC, hydraulic or pneumatic power sources. Special models for any application can be supplied - please contact your distributor for details.

Distributed by:

ALLIED POWER PRODUCTS, INC.

THE WINCH & HOIST SPECIALISTS

6590 SW Fallbrook Place, Beaverton, OR 97008

(503) 626-0654 Fax (503) 646-1996

www.alliedpower.com