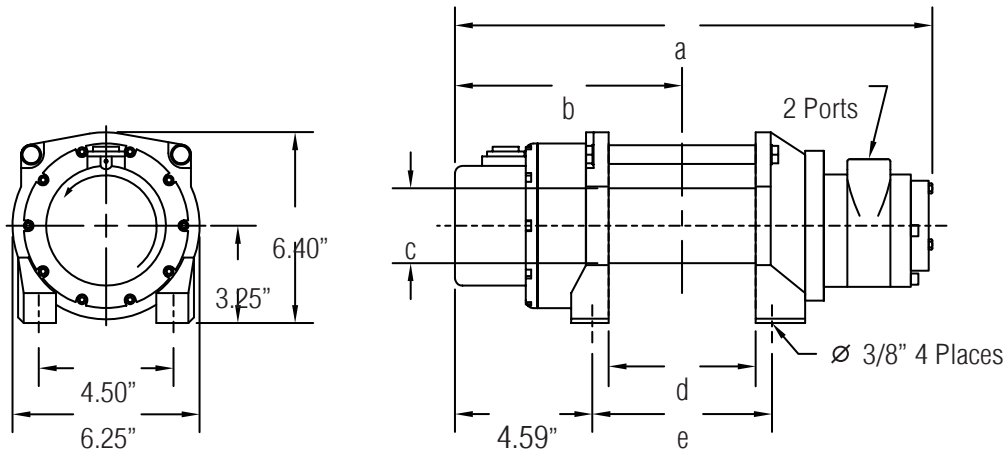


CAUTION: The final determination as to the suitability of this product for any purpose is solely that of the user. Columbia products are not to be used to lift people or to lift anything over people.

DIMENSIONAL DATA



Drum Size	Dimensions					Typical Weight	Wire Rope Capacity			Motor	Port Size
	a	b	c	d	e		3/16"	1/4"	5/16"		
-11	14.2"	6.59"	3.5"	2.7"	4.0"	32 lbs	99'	--	--	0.75 HP	3/8 NPT
-01	15.9"	7.59"	2.5"	5.0"	6.0"	35 lbs	213'	120'	84'	1.25 HP	1/2 NPT
-02	19.9"	9.59"	2.5"	9.0"	10.0"	39 lbs	384'	217'	147'		

PERFORMANCE

Model	HP	Power Input		Gear Ratio	Line Pull • Line Speed (Calculated)		
		PSI	CFM		First Layer	Mean Drum	Full Drum
HD650-P ¹	0.75	70	50	156:1	650 lbs • 26 fpm	530 lbs • 31 fpm	440 lbs • 38 fpm
HD1450-P ²	1.25	70	80	113:1	1450 lbs • 26 fpm	1044 lbs • 36 fpm	816 lbs • 51 fpm
HD2000-P ²	1.25	70	80	156:1	2000 lbs • 19 fpm	1440 lbs • 26 fpm	1125 lbs • 37 fpm

Performance based on intermittent duty cycles.

¹ -11 drum

² -01 and -02 drums

Columbia winches and hoists are available for AC, DC, hydraulic or pneumatic power sources. Special models for any application can be supplied - please contact your distributor for details.

Distributed by:

ALLIED POWER PRODUCTS, INC.

THE WINCH & HOIST SPECIALISTS

6590 SW Fallbrook Place, Beaverton, OR 97008

(503) 626-0654 Fax (503) 646-1996

www.alliedpower.com