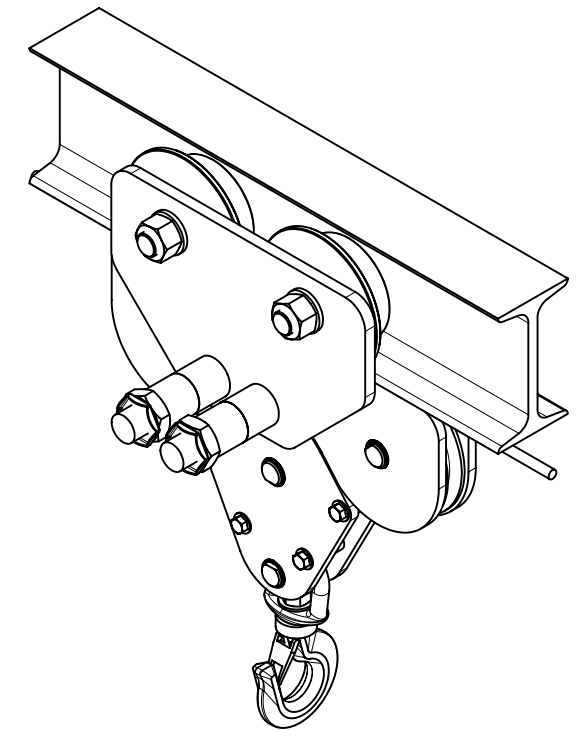
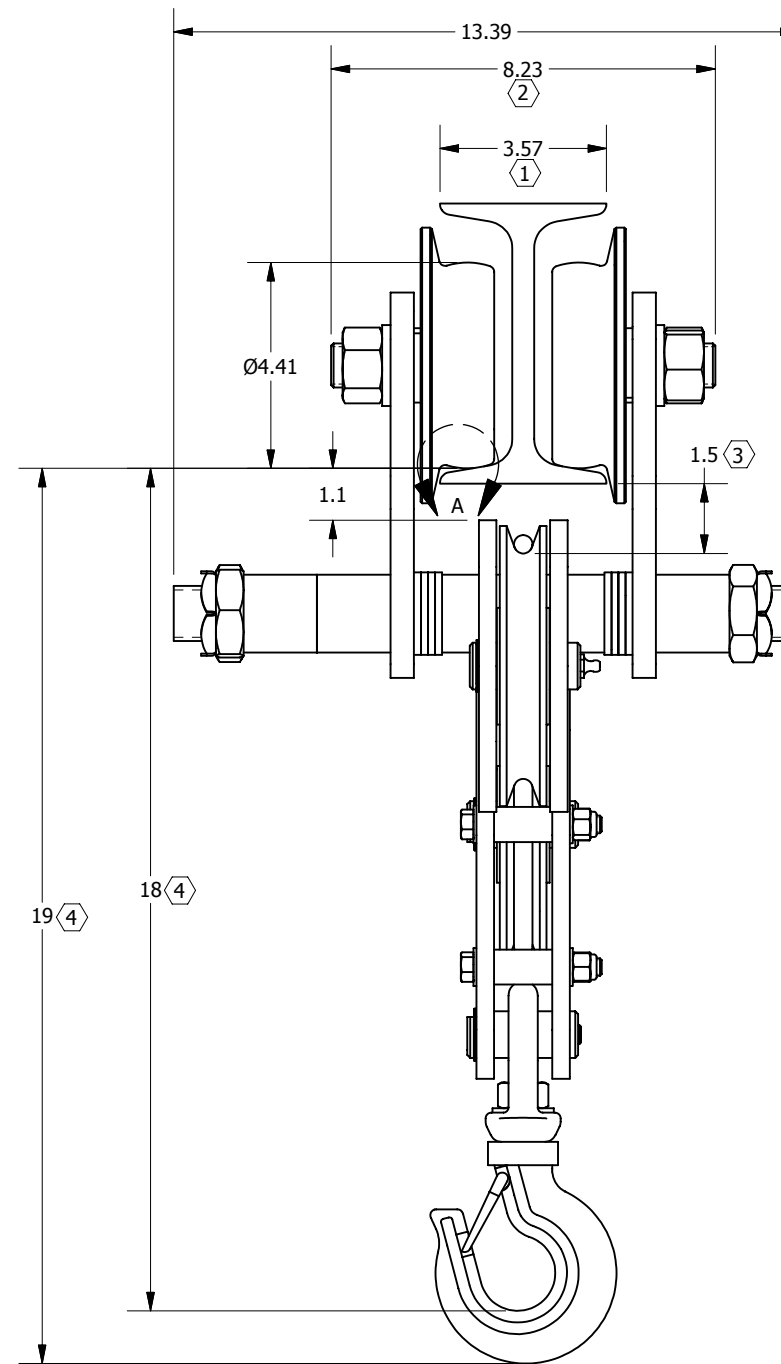
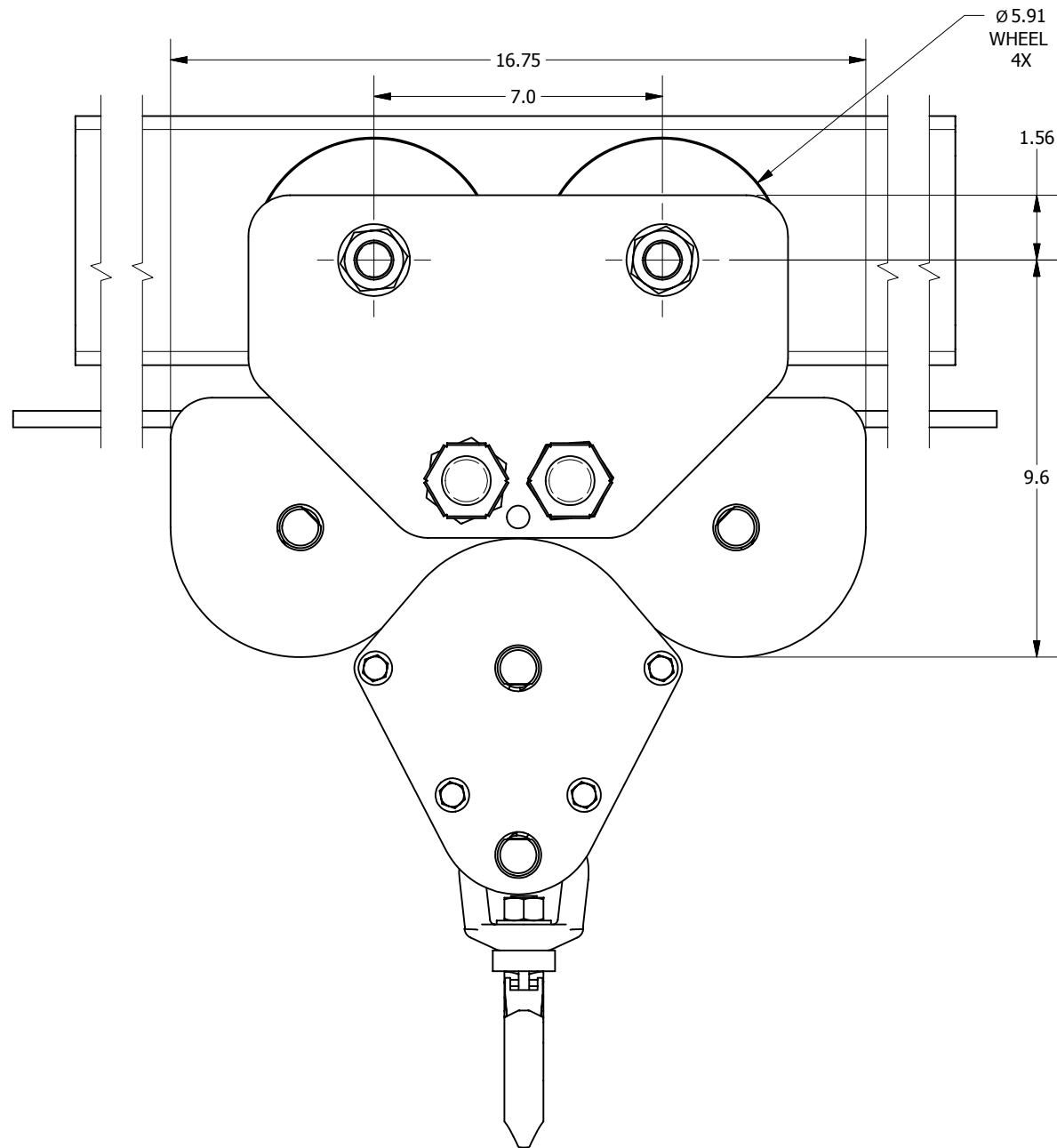


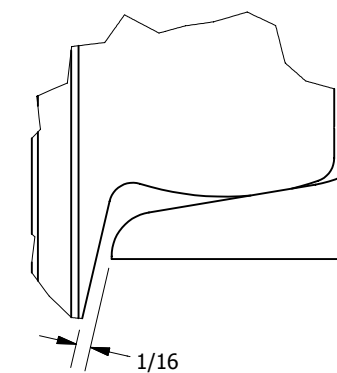
Hammerhead Trolley Dimensions
3-Ton Working Load



NOTES

- ① Minimum flange width; see table for acceptable range of I-beam width.
- ② Dimension varies with flange width; shown with S6X17.25 I-beam.
- ③ Dimension varies with flange thickness; shown with S6X17.25 I-beam.
- ④ Dimension when fallblock is fully raised.
- 5. Compatible with all standard and most wide flange beams.

| Working Load | Wire Rope Sizes | Minimum Beam Height | I-Beam Width | Net Weight (Approx) |
|--------------|-----------------|---------------------|--------------|---------------------|
| 6000 lbs. | 5/16" or 3/8" | 6.0" | 3.3"-8.7" | 150 lbs. |



DETAIL A

ADJUSTMENT ILLUSTRATION & INSTRUCTIONS
 The correct trolley setting is the beam flange width plus approximately 1/16" running clearance on each side of the flange; the clearance should not exceed 3/16".

Move the spacing washers on either side of the trolley side plates to adjust as required.

After adjustment, tighten the trolley pin nuts and locking nuts securely.