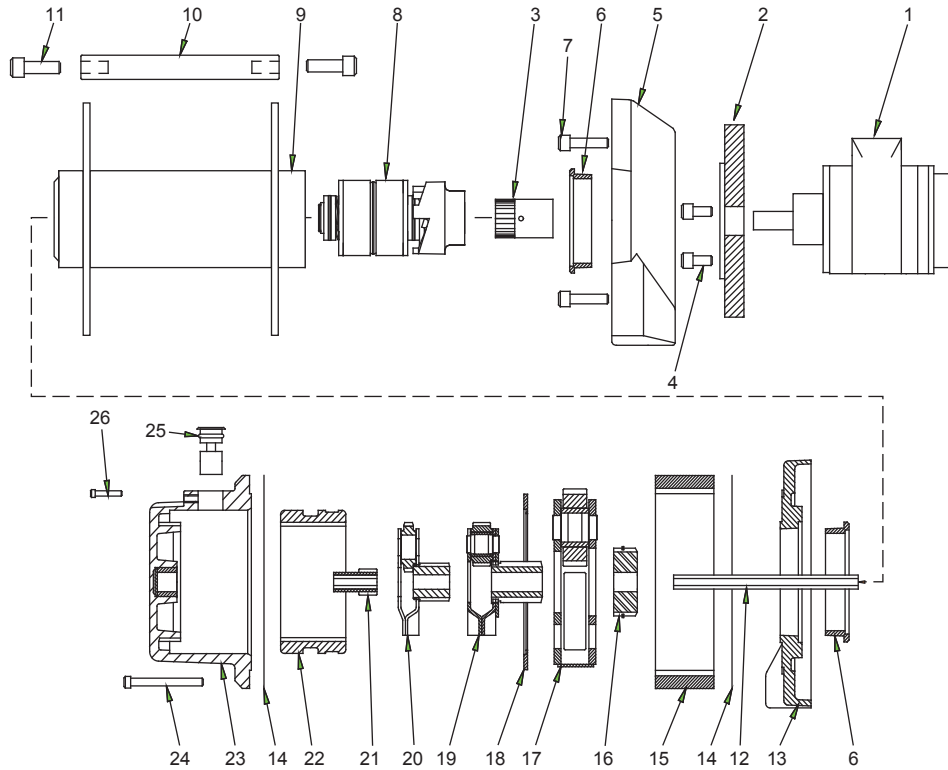


Frame 1 Pneumatic Hoist

Parts Breakdown



Parts List

HD2000-P-02

| Item | Part Number | Qty. | Description |
|------|-------------|------|--------------------------|
| 1 | VA4JXXX10 | 1 | Pneumatic Motor |
| 2 | MC1015 | 1 | Motor Adapter |
| 3 | MC1007 | 1 | Coupling |
| 4 | ----- | 3 | 1/4-20 X 1/2" SHCS |
| 5 | 31610 | 1 | Drum Support |
| 6 | 13831 | 2 | Drum Bushing |
| 7 | ----- | 4 | 1/4-20 X 1" SHCS |
| 8 | 13799 | 1 | Drum Brake |
| 9 | 26107 | 1 | Drum |
| 10 | 32408 | 2 | Tie Rod |
| 11 | ----- | 4 | 5/16-18 X 1" SHCS |
| 12 | ----- | 1 | 5/16" X 10.53" hex shaft |
| 13 | 34506 | 1 | Drum Support |
| 14 | 13848 | 2 | Gasket |
| 15 | 25308 | 1 | Ring Gear |
| 16 | 14584 | 1 | Planetary Gear Coupler |
| 17 | 28432 | 1 | 3rd Stage Carrier |
| 18 | 13826 | 1 | Nylon Thrust Washer |
| 19 | 34342 | 1 | 2nd Stage Carrier |
| 20 | 34339 | 1 | 1st Stage Carrier |

| Item | Part Number | Qty. | Description |
|------|-------------|------|----------------------|
| 21 | 13874 | 1 | Sun Gear |
| 22 | 28353 | 1 | Sliding Ring Gear |
| 23 | 27337 | 1 | Gear Housing |
| 24 | ----- | 10 | #10-24 X 2-1/4" SHCS |
| 25 | 21213 | 1 | Clutch Blockout |
| 26 | 25573 | 1 | Clutch Retainer |